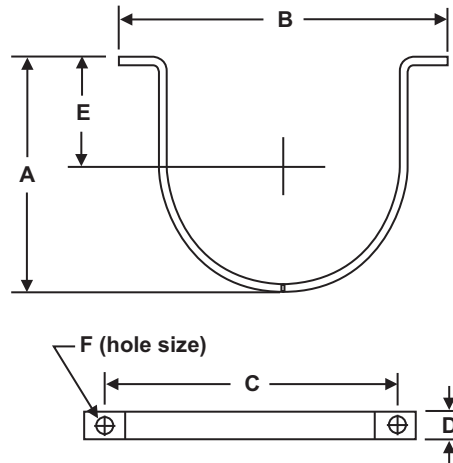


Cylinder Mounting Straps Data Sheet

FEATURES

- UL Listed, ULC Listed, and FM Approved for use with systems listed in the Table , “COMPATIBILITY,” on page 2.

Steel straps and brackets are used to mount the cylinders in a vertical position. Cylinder straps (P/N WK-283945-000, WK-283934-000, 06-235317-001, WK-281866-000, WK-294651-000, 06-236125-001 and 30710193) are available for all size cylinders.



Part Number	Cylinder Size	Cylinder O.D.	Dimension A	Dimension B	Dimension C	Dimension D	Dimension E	Dimension F
WK-283945-000	10 lb., 20 lb.	7.07 in. (180 mm)	6.48 in. (165 mm)	9.62 in. (224 mm)	8.62 in. (219 mm)	1 in. (25 mm)	2.78 in. (71 mm)	0.437 in. (11 mm)
WK-283934-000	40 lb., 70 lb.	9 in. (229 mm)	8.16 in. (207 mm)	11.69 in. (297 mm)	10.69 in. (272 mm)	1 in. (25 mm)	3.50 in. (89 mm)	0.437 in. (11 mm)
06-235317-001	125 lb., 200 lb.	12.75 in. (324 mm)	12.93 in. (329 mm)	16.18 in. (411 mm)	14.56 in. (370 mm)	1.75 in. (44 mm)	5.59 in. (142 mm)	0.625 in. (16 mm)
WK-281866-000	350 lb.	16 in. (406 mm)	15.50 in. (394 mm)	19.50 in. (495 mm)	17.88 in. (454 mm)	1.75 in. (44 mm)	6.06 in. (154 mm)	0.625 in. (16 mm)
WK-294651-000	600 lb.	22 in. (559 mm)	21.56 in. (548 mm)	25.75 in. (654 mm)	24.12 in. (613 mm)	1.75 in. (44 mm)	10.25 in. (260 mm)	0.625 in. (16 mm)
06-236125-001	900 lb.	24 in. (610 mm)	23.75 in. (603 mm)	27.75 in. (705 mm)	26 in. (660 mm)	1.75 in. (44 mm)	12.13 in. (308 mm)	0.625 in. (16 mm)
30710193	1100 lb	30 in (762 mm)	30-1/8 in (765 mm)	34-1/4 in (870 mm)	32-1/4 in (819 mm)	1-1/2 in (38 mm)	15 in (381 mm)	7/16 in (11 mm)

MATERIALS

- Steel, Painted Black SAE 1020

COMPATIBILITY

Series	DIOM P/N
Kidde ECS 500 psi with FK-5-1-12 Agent	06-237585-001
Kidde ECS with 3M™ Novec™ 1230 Fire Protection Fluid	06-236553-001
Kidde Marine with 3M™ Novec™ 1230 Fire Protection Fluid	06-236559-001
Kidde ECS with HFC-227ea Agent	06-236115-001
Kidde Modular ECS with HFC-227ea Agent	06-236116-001
Kidde ECS Marine with HFC-227ea Agent	06-236225-001
Kidde ADS Marine with FM-200™ Agent	06-236595-001
Kidde ADS with FM-200™ Agent	06-236068-001

Agent	Series	Cylinder Size							
		10, 20 lb	40, 70 lb	125 lb	200/ 225* lb	350/ 395* lb	600/ 675* lb	900/ 1010* lb	1100 lb
FK-5-1-12	ECS 500 psi	X	X	X	X	X	X	X	X
Novec™ 1230	ECS	X	X	X	X	X	X	X	
	ADS				X	X	X	X	
HFC-227ea	ECS	X	X	X	X	X	X	X	
	ECS Modular	X	X	X	X	X	X		
	ADS				X	X	X	X	

* 225, 395, 675, and 1010 lb cylinders are only applicable to Kidde ADS with HFC-227ea systems.

EXPORT INFORMATION (USA)

Jurisdiction: EAR
Classification: EAR99

This document contains technical data subject to the EAR.

All trademarks are the property of their respective owners.

This literature is provided for informational purposes only. KIDDE-FENWAL, INC. believes this data to be accurate, but it is published and presented without any guarantee or warranty whatsoever. KIDDE-FENWAL, INC. assumes no responsibility for the product's suitability for a particular application. The fire suppression system design, installation, maintenance, service and troubleshooting must be performed by trained, authorized Kidde Fire Systems distributors for the product to work correctly. If you need more information on this product, or if you have a particular problem or question, contact: KIDDE-FENWAL, INC., Ashland, MA 01721 USA, Telephone: (508) 881-2000.

